

Connect the ATV VIPMux to the Internet with the Netgear RT314 Router

This Tech Tip assumes that your Netgear router is already configured for your ISP.

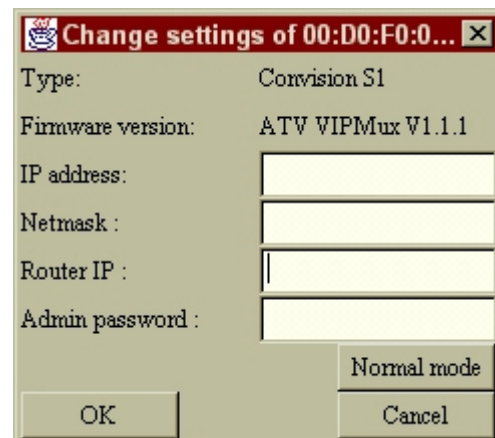
Note: This scenario will not work if your ISP has blocked incoming traffic to port 80. In that case you would need a more robust router that is "NAT/PAT" capable. One such router is the Proxim NetLine 4s Gateway Router.

Also note that these instructions are subject to change beyond our control. They are intended as a guideline only. These instructions should also help with configuring other brands of routers; the information needed by the router will be the same, though the actual steps may vary.

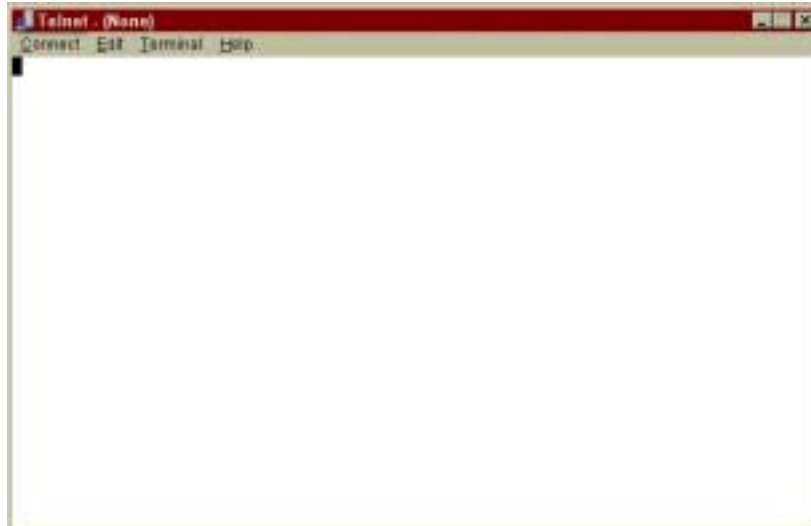
Requirements:

- Computer on LAN side of Network that can connect to router for administration.
- Router (in this case, the Netgear RT314)
- ATV VIPmux
- Straight-through Ethernet cables (not Cross-over; that is used only for direct connections)

1. Run **IPSetup** program (supplied with VIPMux on Floppy Disc). This will install the IPSetup utility on your computer.
2. In addition to the basic IPSetup instructions, click on the button labeled 'Expert mode' to expand the Router IP field.
3. For use with the Netgear router the following values are the only ones that will work:
 - a. **IP address:** 192.168.0.2-254 (select a number from 2-254 that is not already in use)
 - b. **Netmask:** 255.255.255.0
 - c. **Router IP:** 192.168.0.1
4. Click **OK** and close IPSetup program. The VIPMux will reboot.



5. Next, click Start and select Run from your computer's menu.
6. Type 'telnet 192.168.0.1' into the dialog box and press "Enter". This will open a Telnet session in a separate window.



7. Type in the user name and password to access the internal menu of the router.
8. Choose menu 15 by typing "15" and press **Enter**
9. Configure port number 80 and enter the IP address of the VIPMux
10. Select Menu 21 – **Filter Set Configuration**
11. Enter 3 to select **Filter Set Number 3** (TEL_FTP_WEB_WAN) for editing.
12. Press **ENTER** three times to reach Menu 21.3 – **Filter Rules Summary**.
13. Enter 3 for **Rule 3** (Port 80) and press **ENTER**
14. In the Filter Rule menu, use Tab or Enter to reach the **Action Matched** parameter.
15. Press the Space Bar until **Action Matched = Forward**
16. Press **ENTER** three more times to save the menu and exit to the previous menu
17. Press ESC twice to return to the top menu
18. Enter menu 24.1 (**System Maintenance-Status**).

The "WAN IP address" listed is the address you will type into a browser to access the VIPMux from the internet.

19. Press ESC twice to return to the top menu, and type 99 to exit the Telnet session